



Textile Carpet Tiles

tessera[®] inline



50 x 50 cm

creating better environments

Forbo
FLOORING SYSTEMS



tessera® inline

Designed for modern spaces

Timeless linear patterning for contemporary interiors, Tessera Inline presents a refined aesthetic that performs in busy workplace and education environments. Inline's textured loop pile construction adds depth and quiet sophistication, delivering style and durability in perfect alignment.

Quiet lines, soft geometry

Tessera Inline introduces subtle linear geometry to modern commercial interiors with its multi-height loop texture. Crafted from 100% solution-dyed polyamide for lasting vibrancy and produced using renewable energy with 62% recycled content, Inline offers strong performance with a reduced environmental footprint.

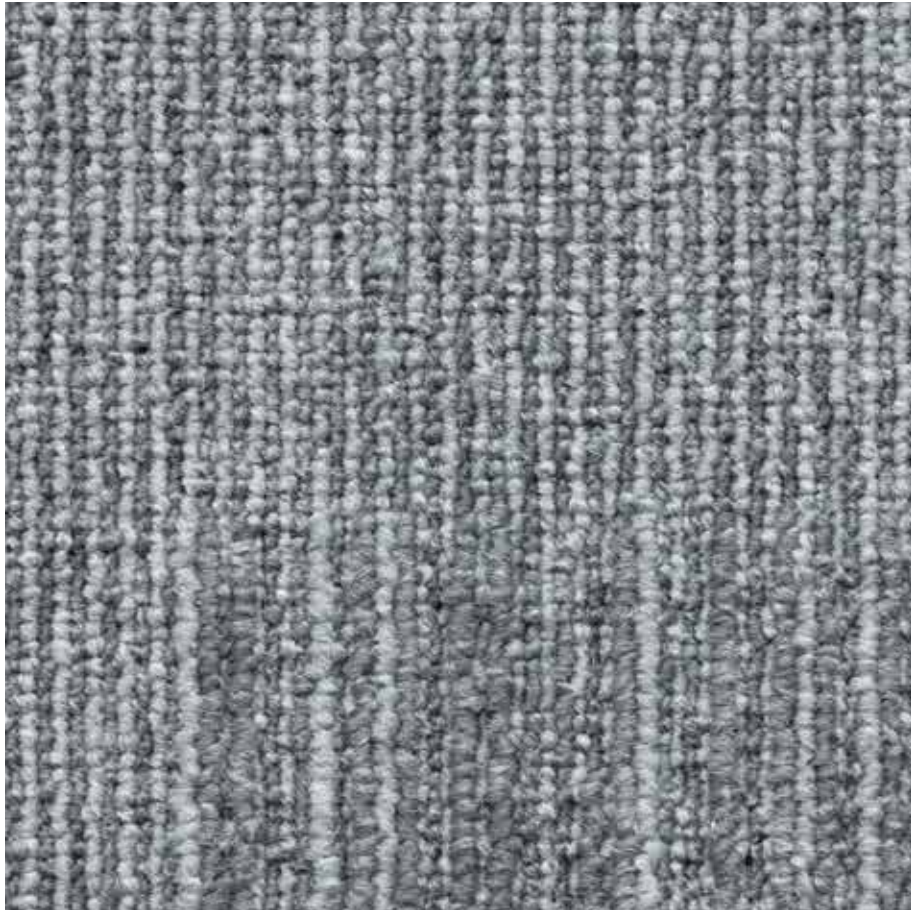
Tessera Inline shares its colour tones with Tessera Layout & Outline, making zoning, transitions and cohesive design schemes effortless across any space.

A robust and durable construction

- Lasting colour and quality; made from 100% solution-dyed polyamide, with colour locked into the core of every fibre for exceptional resistance to wear and fading.
- Robust commercial performance; Class 33 classification confirms suitability for intensive workplace and education use.
- Low environmental impact; with 3.82kg embodied carbon (A1-A3), 62% recycled content and produced using renewable energy, Tessera Inline delivers flooring with reduced environmental impact, confirmed by a third party verified EPD.
- Good indoor air quality - Indoor Air Comfort Gold and GUT certification ensures Tessera Inline support healthier indoor air environments.

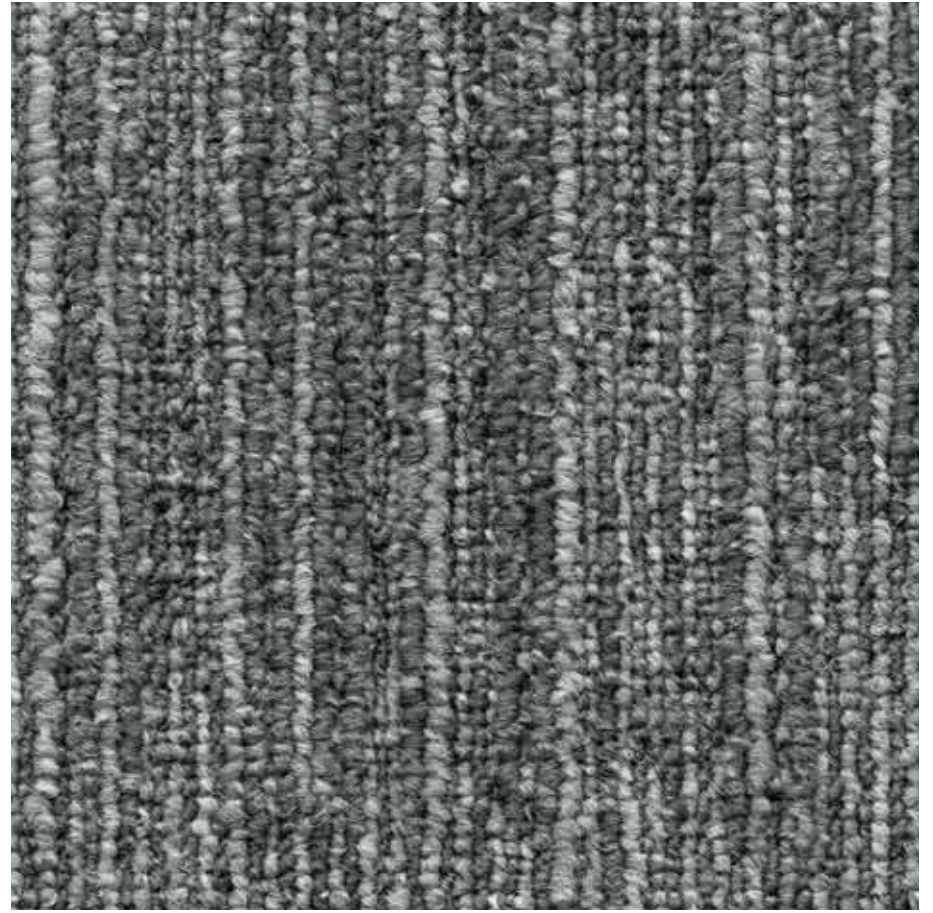
A trend-led palette for contemporary spaces

- Subtle linear movement; delivered by the timeless design in a textured loop pile ensures visual comfort in busy environments.
- Design with complete flexibility; Tessera Inline shares yarn colours with Tessera Layout & Outline, enabling balanced combinations of texture, tone and linear detailing.
- Aligned to complement interior trends; the colours are selected to align with workplace interior schemes and to complement colours and surfaces found in the wider Forbo Flooring portfolio, allowing for the creation of flowing, connected interior spaces.



878 | steam

LRV 23%



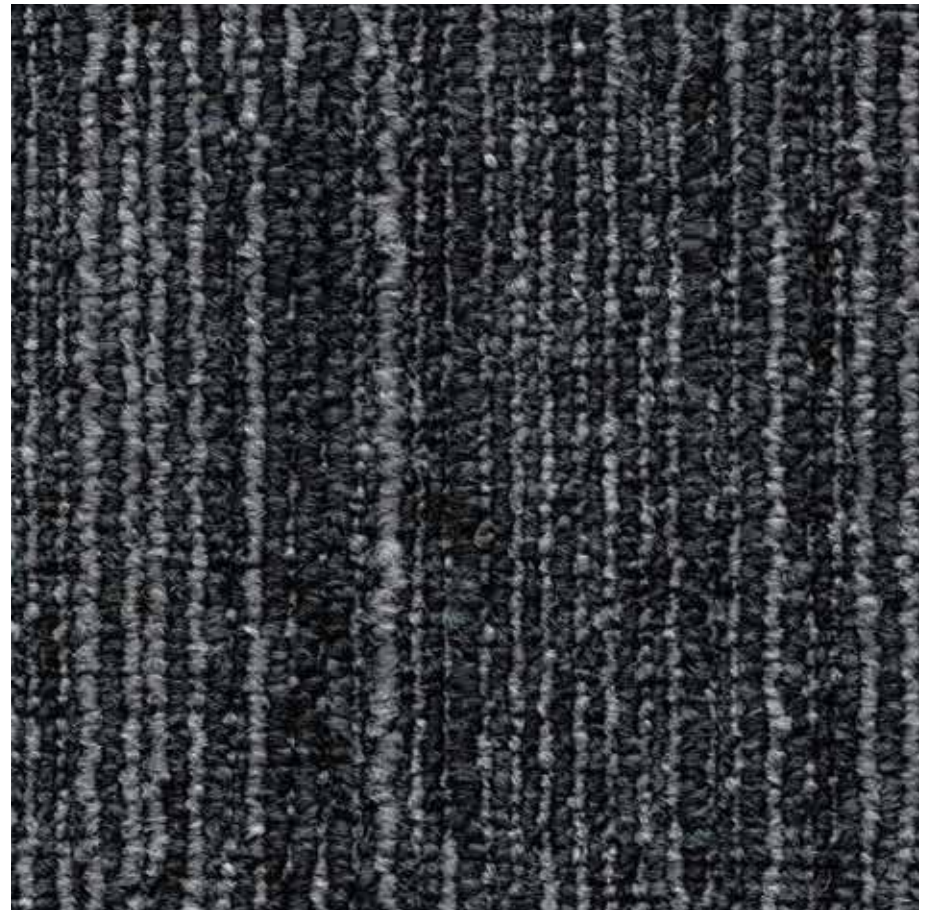
873 | tungsten

LRV 15%



880 | nucleus

LRV 6%



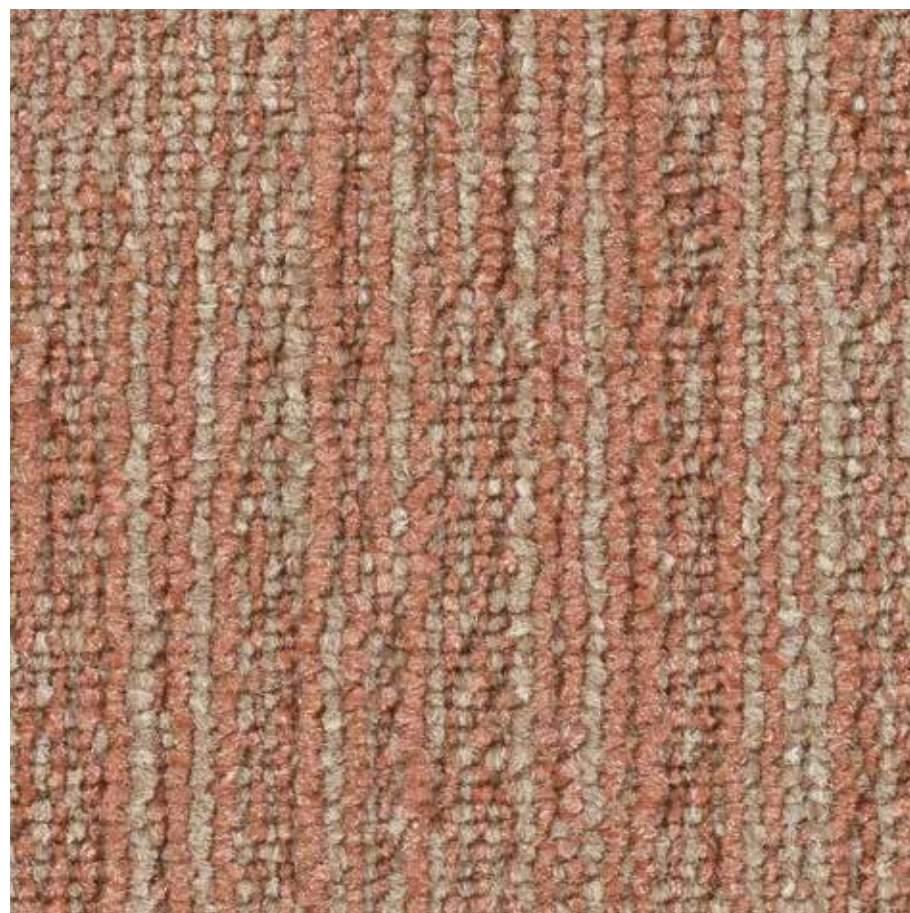
872 | onyx

LRV 8%



874 | tiramisu

LRV 16%



881 | flamingo

LRV 21%



870 | molasses

LRV 8%



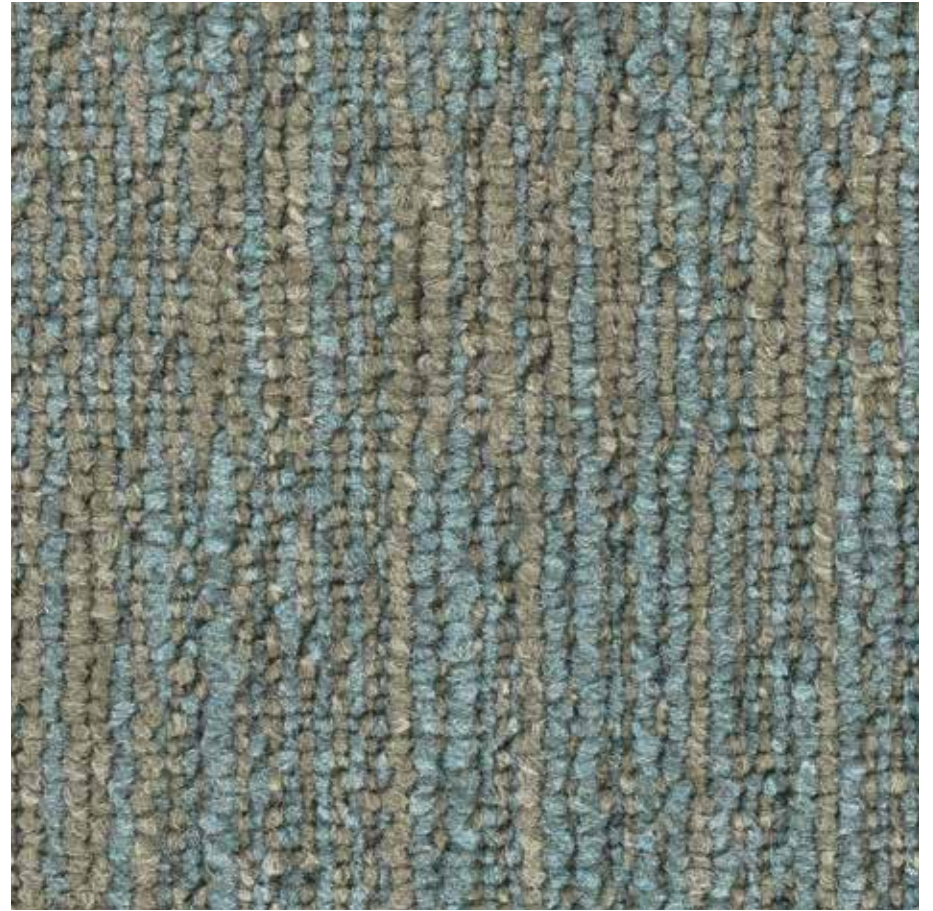
882 | glow

LRV 16%



875 | banoffee

LRV 20%



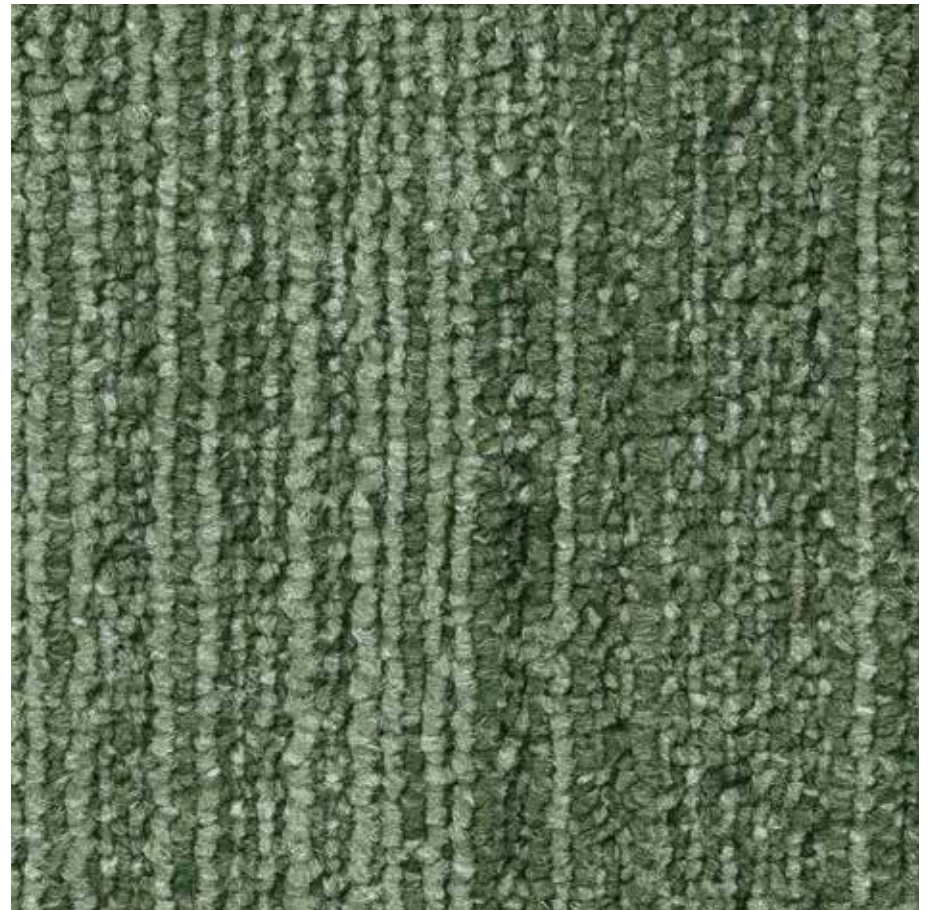
883 | coast

LRV 17%



884 | branchline

LRV 12%

















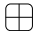


885 | oregano

LRV 13%



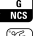



Technical specifications

Inline meet the requirements of EN 1307

Description	Tufted multi-pile height loop carpet tile	
 Tile size	EN ISO 24342:2018	50 cm x 50 cm
 Total thickness	ISO 1765	6.5 mm
Pile height	ISO 1766	3.9 mm
 Collection size	12	
Packaging per carton tiles	16 (4 m ²)	
 Commercial use	EN ISO 10874	Class 33
Pile composition	100% polyamide 6	
Dye method	100% solution dyed	
Stitch density	ISO 1763	198,374 per m ²
 Pile weight	ISO 8543	605 g/m ²
Total weight	ISO 8543	4120 g/m ²
Primary backing	Polyester	
 Secondary backing	ProBac™ recycled mineral filler with low amount of modified bitumen and polyester fleece	
Alternative available secondary backing	SOFTba®	
 Acoustical impact noise reduction	ISO 10140-3	25 dB
 Acoustical sound absorption	ISO 354	aw = 0.20 (H)
 Castor chair continuous use	ISO 4918	r ≥ 2.4
 Colour fastness to light	EN ISO 105-B02	≥ 5
 Dimensional stability	EN 986	≤ 0.2 %
 Indoor air emissions: TVOC after 28 days	EN 16516	≤ 0.1 mg/m ³
 Creating Better Environments		
 Renewable Energy	All Tessera carpet tiles are manufactured using 100% renewable energy (electricity & biogas)	
 Recycled Content	Inline carpet tiles contain 62% recycled content by weight	
 Indoor air quality	Inline carpet tiles comply to Indoor Air Comfort Gold 8.0 (2022)	
Ska Rating	Inline meets Ska Rating criteria for M12 soft floor coverings in office, retail and higher education schemes	
Prodis-GUT	www.pro-dis.info	F2BC1C73
 Installation method	Monolithic, quarter turn or tessellated	

Inline carpet tiles meet the requirements of EN 14041:2004 and BS EN 14041:2004



 Product code	EN 14041	1170100-DOP-109
 Product code	BS EN 14041	1170100-DoP-GB109
 Reaction to fire	EN 13501-1	B _{fl} -s1, G, NCS
 Slip resistance	EN 13893	μ ≥ 0.30
 Body voltage	ISO 6356	≤ 2.0 kV
 Thermal conductivity	EN 12524	0.06 W/mK

All Forbo Flooring Systems' sales organisations and manufacturing sites worldwide have certified Quality Management Systems in accordance with ISO 9001. All Forbo Flooring Systems' manufacturing plants have certified Environmental Management Systems in accordance with ISO 14001. Tessera carpet tiles and planks are manufactured in a facility certified to SA8000® and ISO 45001. The Life Cycle Assessment (LCA) of Forbo Flooring Systems' products is documented in individual Environmental product declarations (EPD's).

Colourway choice

As with any product, colour and design influence the appearance retention of the floor. The level and type of traffic should be considered as part of the process for selecting colourways. Light colours may not be suitable for heavy traffic areas.

Installation and maintenance Shades may vary from batch to batch and should be checked before installation. Batches should not be mixed in the same location. All Tessera products are to be installed in full accordance with Forbo installation instructions and recognised trade standards.

Our recommended adhesive for our collection of Tessera carpet tiles is 542 Eurofix Tack Plus.

A well designed entrance flooring system will prevent dirt and moisture from being tracked into the building, prolonging the life of the carpet tiles, reducing cleaning, repair and overall maintenance costs. **Forbo Coral and Nuway entrance systems** are independently proven to remove and retain up to 95% of all dirt and moisture entering a building. Please contact customer services for more information.

Regular vacuuming is essential (using a high suction power driven brush vacuum). Spills and surface stains can be removed by sponging with a damp cloth or, for more resistant stains, with a mild detergent solution. For full installation and cleaning and maintenance instructions please go to www.forbo-flooring.com

The Netherlands

Forbo Flooring B.V.
Postbus 13
1560 AA Krommenie
T: (075) 647 78 80
contact@forbo.com
www.forbo-flooring.nl

Poland

Forbo Flooring Polska
ul. Jeleniogórska 16
60-179 Poznań
T: +48 (61) 862 13 82
F: +48 (61) 622 71 75
info.pl@forbo.com
www.forbo-flooring.pl

Spain

Forbo Pavimentos S.A.
Pasaje Bofill, 13-15
08013 Barcelona
T: +34 93 20 90 793 - 93 20 06 732
F: +34 93 245 69 60
info.pavimentos@forbo.com
www.forbo-flooring.es

Other countries

Forbo Flooring B.V.
P.O. Box 13
1560 AA Krommenie
The Netherlands
T: +31 75 647 74 77
question@forbo.com
www.forbo-flooring.com